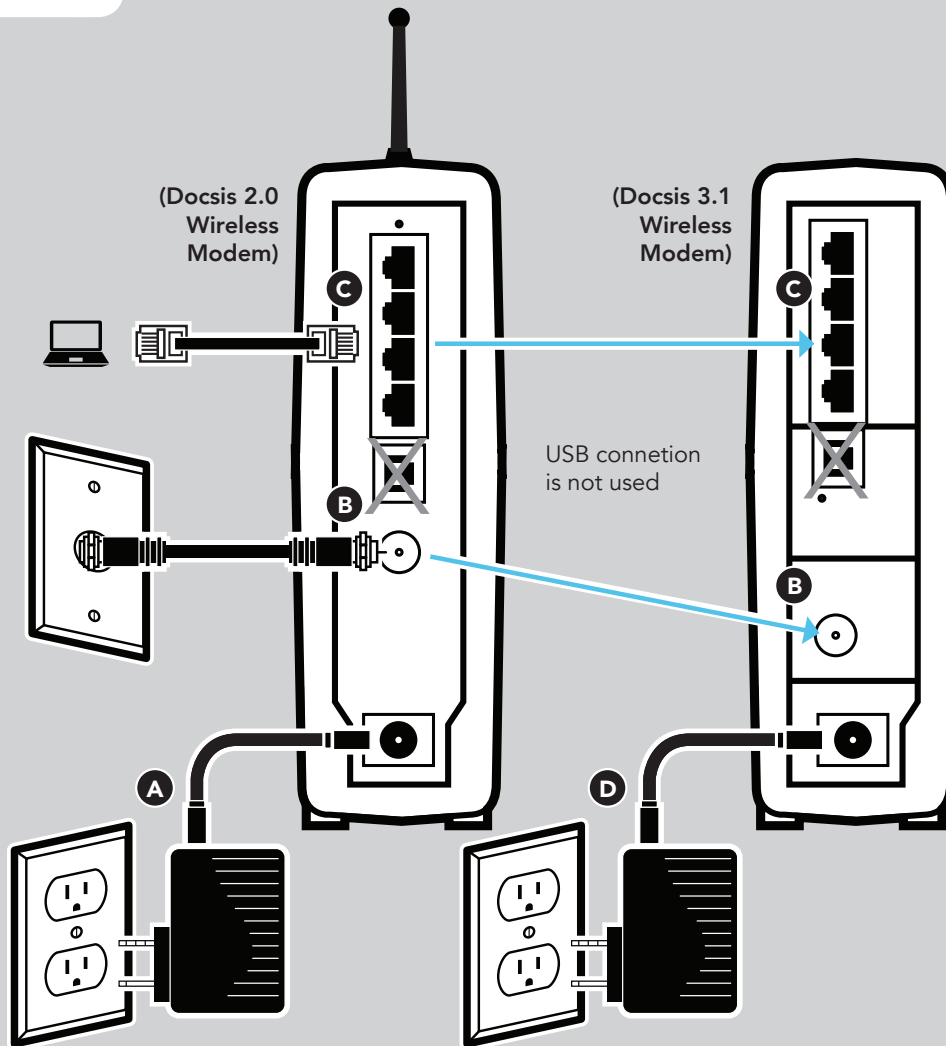


# Cable Modem Swapping Instructions

## Wireless Modem



- 1 Disconnect the power cord **A** from the electrical outlet **AND** from your existing modem.
- 2 Disconnect the coax cable **B** from the existing modem and connect it to the cable port on your new equipment.
- 3 Disconnect the Ethernet line **C** from the existing modem and plug it into the Ethernet port on your new modem.
- 4 Connect the **NEW POWER CORD D** to the electrical outlet and your new modem.

- 5 After steps 1-4 are complete, power up your modem.
- 6 Once lights are on modem, launch browser and review the acceptable use policy and follow any instructions.
- 7 Restart modem and start surfing!